



Panel Description

Self-supporting panels with Eccentric Hook closing system are made up of a steel sheet on each side and a core of rigid Polyurethane or Polyisocyanurate foam (B-s2-d0 / B-s1-d0). These panels have been specially designed for the construction of facades of industrial and commercial buildings and divisions in general.

The maximum recommended length for this product is 17,000 mm. with a useful width of 1,200 mm.

Classification against fire

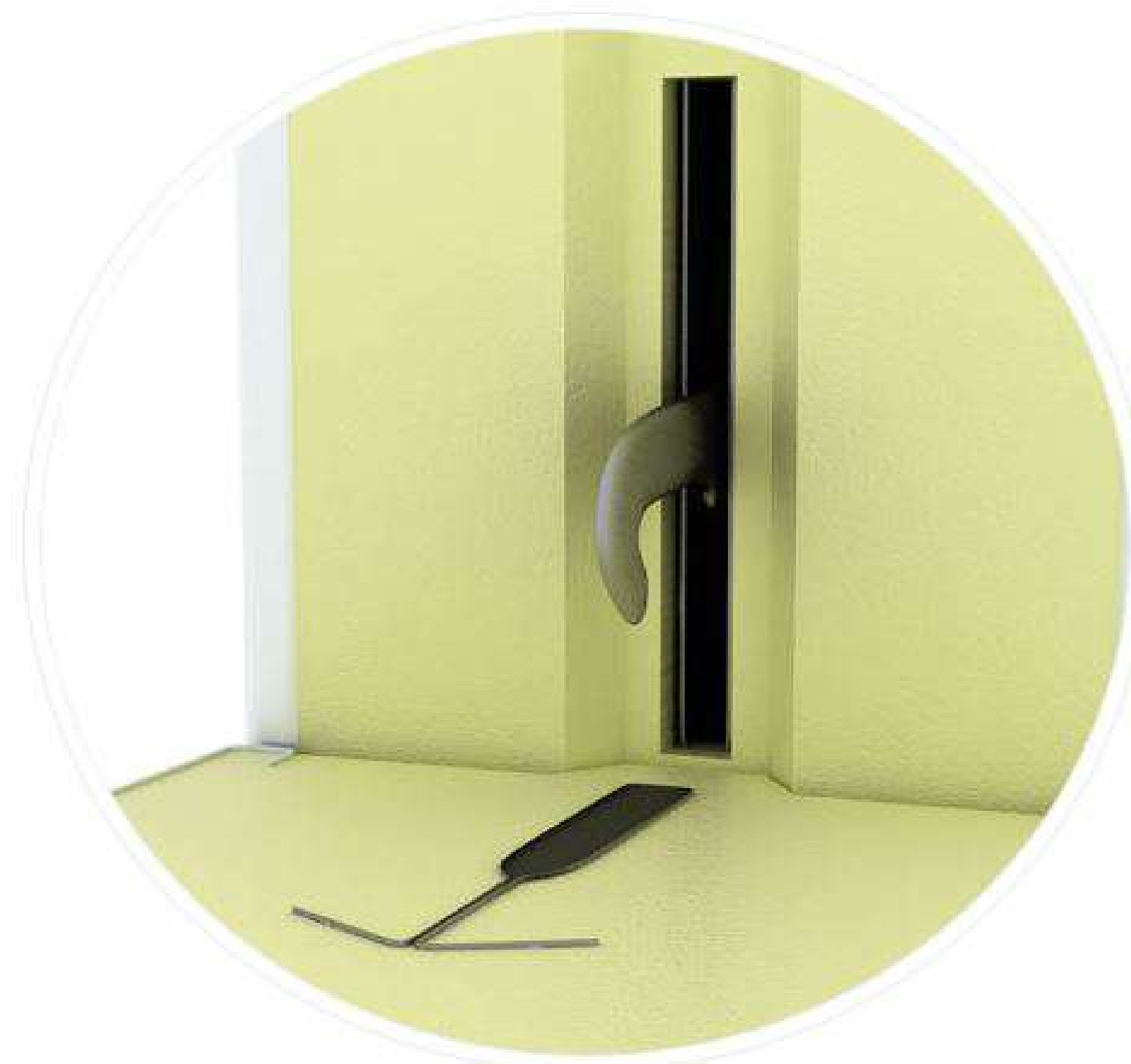
Depending on the type of foam chosen, the panel will have a reaction to fire classification:

- PUR foam (Polyurethane): B-s2-d0
- PIR foam (Polyisocyanurate): B-s1-d0

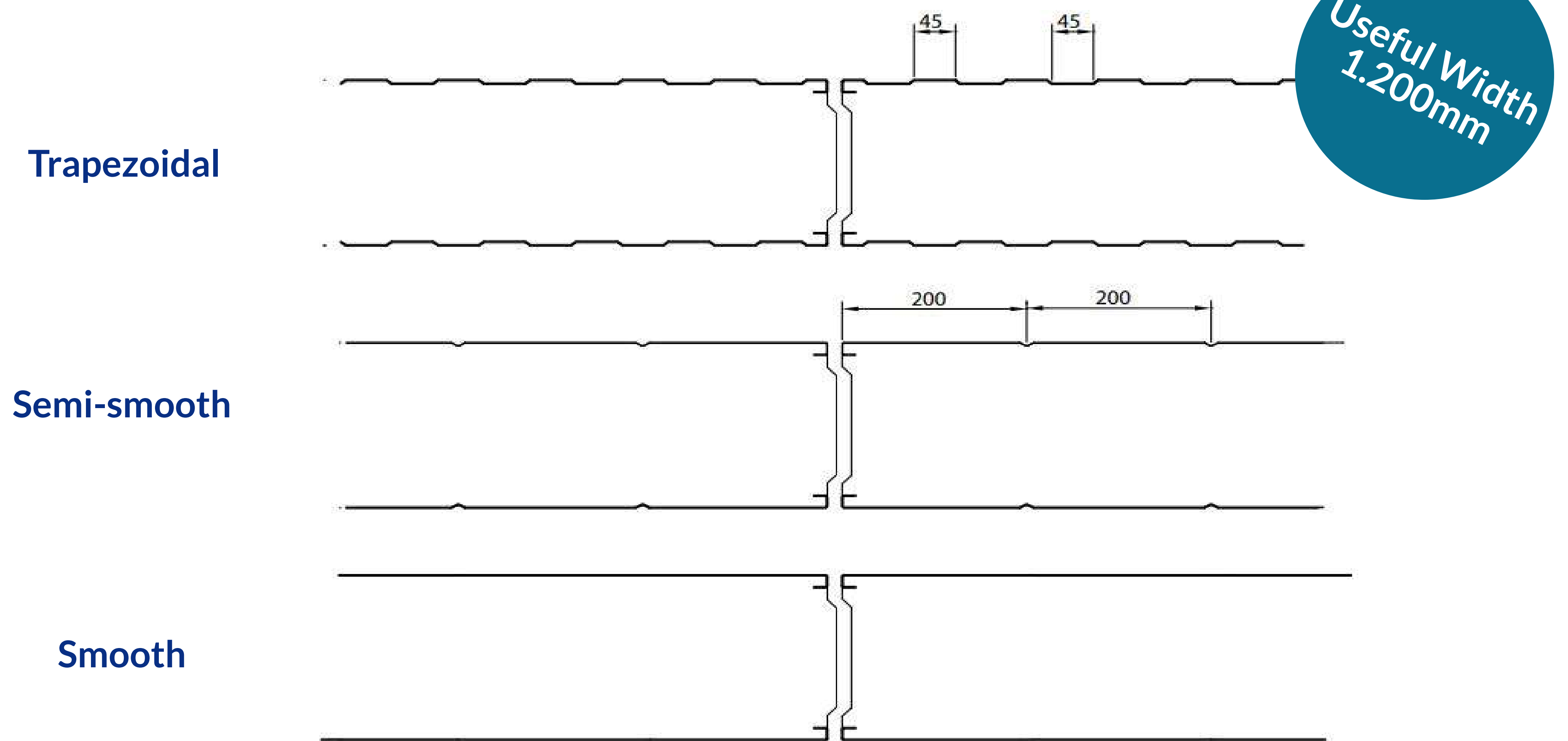
Main Advantage

The eccentric closures guarantee the tightness of the joints, achieving a balanced set that minimizes the losses of cold and facilitates the control of temperature and humidity, thus meeting the essential requirements of the agri-food industries.

Eccentric Hook Detail



Profile and Panel Section



Technical specifications of the product

ESPESOR (mm)	PESO(Kg/m ²)	K(W/m ² K)	K(Kcal/m ² h°C)	AUTOPORTANCIA (mm)
40	10,01	0,55	0,473	4500
60	10,37	0,367	0,316	5500
80	11,03	0,275	0,237	6000
100	11,63	0,22	0,189	6500
125	12,47	0,176	0,151	7000
150	13,3	0,147	0,126	7500
175	14,06	0,126	0,108	8000
200	14,8	0,11	0,095	8000
225	15,61	0,098	0,084	8000
250	16,43	0,088	0,076	8000

Visual panel detail



DIPPANEL, S.L.U.

Avd. Dólmene de Valencia, 6
41907. Valencia de la Concepción (Seville)
Spain

www.dippanel.com

954 436 422
dippanel@dippanel.com

Actual application of panel with eccentric hook

**DIMAROSA (Distribución Mariscos Rodriguez, S.A.) - Palos de la Frontera
Distribution Center -Huelva**



DIPPANEL, S.L.U.
Avd. Dólmene de Valencia, 6
41907. Valencina de la Concepción (Seville)
Spain

www.dippanel.com
954 436 422
dippanel@dippanel.com